

## 75 Reasons to Visit Shenandoah National Park and the Surrounding Communities

- Experience this scenic wonder while driving the crest of the Blue Ridge Mountains in Shenandoah National Park:  
\_\_\_\_\_
- Step back in history and experience the relaxing solitude of President Hoover's "Summer White House" at  
\_\_\_\_\_
- Take a leisurely stroll through this 135-acre showplace of flora and fauna: \_\_\_\_\_
- Re-live the early days of Skyland Resort by visiting the exhibit and restored cottage called \_\_\_\_\_
- Hike a portion of this famous 2,175 mile trail, 101 miles of it in the SNP: \_\_\_\_\_
- From Skyline Drive, you can see his profile. Hikers climb to his forehead and look west with him from \_\_\_\_\_
- Slow down your vehicle to view a fissure filled with solidified lava at the north end of \_\_\_\_\_ tunnel.
- Discover the impact of "Roosevelt's Tree Army" on the establishment of SNP by learning about the  
\_\_\_\_\_
- Accept the challenge of hiking this magnificent peak for a look at the ancient granite on  
\_\_\_\_\_
- Meet live raptors and learn about their role in the ecosystem by attending the \_\_\_\_\_ Ranger Program.
- Watch a trickle grow and plunge over a series of waterfalls, including the 2nd highest in the park at  
\_\_\_\_\_
- Hike through federally designated wilderness, along a beautiful stream, past cascades and a waterfall on this 4-mile circuit just north of Big Meadows:  
\_\_\_\_\_
- A spring hike to the 3rd highest waterfall in the park is spectacular with colorful wildflowers at \_\_\_\_\_
- Discover the breath-taking views of the tallest waterfall in the park at \_\_\_\_\_

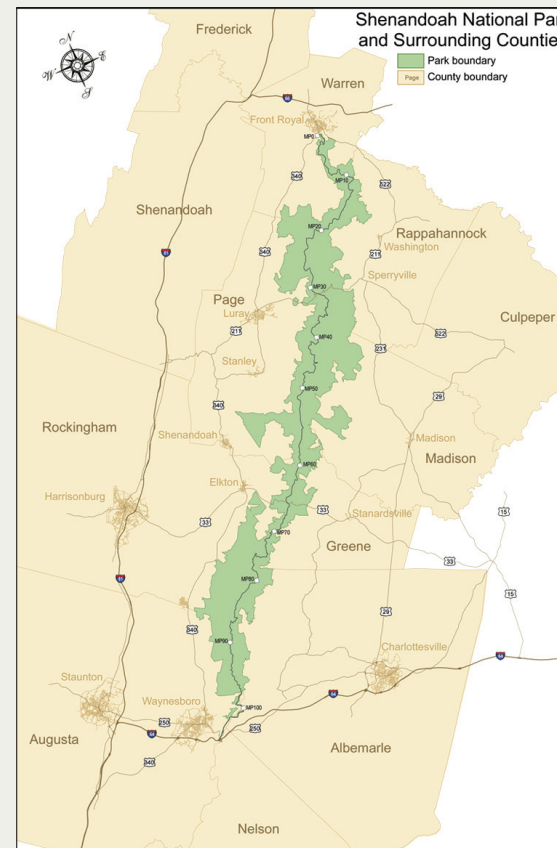
Winners will be drawn from all correctly completed forms for the following prizes:

### Grand Prize

Shenandoah National Park Vacation Package from Aramark for two that includes: 2 nights stay at Skyland Resort, 2 dinners, 2 breakfasts, and 1 hour guided horseback ride. A limited edition print of *Old Rag and the Piedmont* signed and numbered by artist Kevin H. Adams, and from Blue Ridge Biplane Rides an hour long flight for two over the Shenandoah Valley and Piedmont.

16 Additional Drawings for Prize Packages have been made possible through the generous donations from the following area businesses and attractions. Complete descriptions of prize packages can be found on [www.celebrateshenandoah.org](http://www.celebrateshenandoah.org)

Perennial Inn at Desiderata Farm  
Brandy Station Foundation  
Graves Mountain Lodge  
Shenandoah County Tourism  
Shenandoah Mountain Guides  
Fountain Hall Bed & Breakfast  
Culpeper Renaissance & Merchants of Downtown Culpeper  
NOVA 4-H Center  
Massanutten Resort  
Best Western Plus Waynesboro Inn & Suites  
Ridgeview Bed & Breakfast  
Nelson County  
Wintergreen Resort  
TownePlace Suites by Marriott Winchester  
The Mimslyn Inn  
Barn at Elbow Landing  
Wayside Inn Middletown  
Griffin Tavern & Restaurant  
Central Coffee Roasters  
Thomas Jefferson Foundation, Monticello  
Museum of Culpeper History  
Denise Chandler, Country Places Realty  
Wayside Theatre  
The Blue Rock Inn  
Solace Studios Fine Handcrafts  
R.H. Ballard Art, Rug & Home, Shop & Gallery  
Luray Caverns  
Museum of Shenandoah Valley  
Celebrating Patsy Cline, Inc.  
Rocktown Gift Shop  
Shenandoah Valley Discovery Museum  
Appalachian Outdoors Adventures  
The Virginia Chutney Company  
Stone Soup Books & Café  
White Oak Lavender Farm



Complete and mail to:  
Shenandoah National Park  
Attn: 75 Reasons

3655 U.S. Highway 211 East, Luray, VA 22835

Must be postmarked no later than November 1, 2011.  
Individuals who turn in correctly completed forms will be awarded an official certificate and a specially designed decal.  
Prize winners will be drawn from all correctly completed forms.

Name: \_\_\_\_\_

Address: \_\_\_\_\_

City: \_\_\_\_\_

State: \_\_\_\_\_ Zip: \_\_\_\_\_

Phone: \_\_\_\_\_

Email: \_\_\_\_\_

Make Your Destination a Journey  
Discover 75 Reasons to  
Visit Shenandoah National Park  
and the Surrounding Communities



[www.CelebrateShenandoah.org](http://www.CelebrateShenandoah.org)

# 75 Reasons to Visit Shenandoah National Park and the Surrounding Communities

- Unwrap the wonders of the park's highest peak with a glorious 360 degree view at the summit of \_\_\_\_\_
- Discover the spectacular wall-like block of white rock just beyond the deep vertical cleft at \_\_\_\_\_
- Enjoy this easy and pleasant walk through a former apple orchard, past the Fox family cemetery and a barn at \_\_\_\_\_
- Find the historic ruins of an old Episcopal Mission and the settlement that once lived at \_\_\_\_\_
- Meet a park ranger, pick up detailed hiking guides and maps, and see a film and an exhibit at this Visitor Center near the northern entrance: \_\_\_\_\_
- A complete guide to ranger led programs, activities, safety tips, and regulations is available by picking up this publication at entrance stations to the park: \_\_\_\_\_
- View the Shenandoah Valley or Piedmont of Virginia from one of over \_\_\_\_\_ along Skyline Drive.
- In spring, observe from a distance the spotted fawns of \_\_\_\_\_
- Catch sight of this impressive falcon that is making a comeback in the park: \_\_\_\_\_
- Discover columbine, lady slippers, and trillium in the spring during the annual Wildflower Weekend held the month of \_\_\_\_\_
- Make plans to visit the park the first Saturday in June to participate in \_\_\_\_\_
- The mountain streams are one of the last remaining protected strongholds of this native fish: \_\_\_\_\_
- You have a good chance of seeing one of these since SNP has the densest population documented within the U.S.: \_\_\_\_\_
- Experience the rededication of the park on June 25, 2011, but the actual dedication took place on \_\_\_\_\_
- Sample dishes made from this wonderful native berry during Aramark's annual festival held on July 16, 2011 at Big Meadows Wayside: \_\_\_\_\_
- Hiking or driving through the park in the fall of the year, you will see beautiful colors of deep red, yellows, and orange, especially when the color peaks in \_\_\_\_\_
- Roll down the windows and enjoy a relaxing driving experience on Skyline Drive but be sure you keep to the speed limit of \_\_\_\_\_
- It is easy to find your way through the park and find areas of interest if you pay attention to \_\_\_\_\_ along the roadside.
- Over 180 miles of trails are open to \_\_\_\_\_ so if you like to ride, visit [www.nps.gov/shen](http://www.nps.gov/shen) to find the best places.
- Build awareness, appreciation, and respect for America's public lands. Learn the seven basic principles through this "Outdoor Ethics" program: \_\_\_\_\_
- Experience areas where "man himself is a visitor who does not remain" in nearly 80,000 acres of these designated areas within SNP: \_\_\_\_\_
- Hunt for the earth's natural and geological features as treasures using GPS through \_\_\_\_\_
- Check the back page of the visitor guide, *The Overlook*, for a schedule of \_\_\_\_\_ where you can learn about the many plants and animals that live in SNP.
- Discover a world beyond where the pavement ends and carry everything you need to survive overnight while \_\_\_\_\_
- Kids, seven and up, will have lots of fun doing special activities in the park to become a \_\_\_\_\_
- Whether you like an easy walk or a rugged climb, with this many miles of trails you will not be disappointed: \_\_\_\_\_
- Learn about the history of the park by visiting the comprehensive exhibit at \_\_\_\_\_
- If you love seeing wildlife in its natural habitat, you stand a good chance with this many species of mammals calling SNP home: \_\_\_\_\_
- Observe the remains of ancient lava flows, well-weathered and deeply split at \_\_\_\_\_
- Ask for the Scavenger Hike guide to discover the forest's story of growth and change on this gentle trail near Byrd Visitor Center: \_\_\_\_\_
- Named for the family that farmed the Loft Mountain area before the park was established, this trail is fun to explore using a special guide you can get at the Loft Wayside or at the trailhead: \_\_\_\_\_
- Sometimes called a "miniature Old Rag," this popular hike at Mile 56.4 features a rock scramble and a spectacular 360-degree view: \_\_\_\_\_
- Stroll the longest outdoor pedestrian mall hosting stores, restaurants, art, and theater in the city of \_\_\_\_\_
- Visit this four season mountain retreat on the eastern slopes of the Blue Ridge Mountains and change your attitude to match the altitude at \_\_\_\_\_
- Craft and culinary destinations abound in Nelson County along the \_\_\_\_\_
- Learn about the influence of our early European settlers by visiting a series of living farms depicting their roots and melding cultures at \_\_\_\_\_
- Anglers will love a visit to Waynesboro for their annual \_\_\_\_\_
- If you seek unique, there is no other town in the world named \_\_\_\_\_
- Visit Culpeper and tour the only legal one of these in the state: \_\_\_\_\_
- Discover why this county is called the Gateway to the Blue Ridge: \_\_\_\_\_
- Trek up the mountain at Swift Run Gap in Greene County and follow the trail of Gov. Spotswood and \_\_\_\_\_
- Begin your hike up Old Rag while enjoying the rolling landscape of this pastoral county: \_\_\_\_\_
- Visit Madison for the 4th of July and experience a day of family fun and fireworks at \_\_\_\_\_
- Looking for an interesting overnight get-away? Check out Page County since they are known as the state's \_\_\_\_\_
- Hear rocks sing at \_\_\_\_\_
- For a five-star, five-diamond experience, dine in Rappahannock County at the world famous \_\_\_\_\_
- Support VA's buy-local, buy-fresh food movement by attending the annual Farm Tour in \_\_\_\_\_
- Walk winding landscaped paths of native plants, botanical gardens, and expansive lawns at this arboretum in Harrisonburg: \_\_\_\_\_
- Enjoy the culture of small, Shenandoah Valley towns like Elkton and Dayton in \_\_\_\_\_
- You can see the distinctive peak of this mountain resort from Skyline Drive but make sure you take time to visit \_\_\_\_\_
- Civil War history buffs will want to visit this state historical park in Shenandoah County: \_\_\_\_\_
- Find small towns that are like "a string of pearls" along the Old Valley Pike, Rte 11, in \_\_\_\_\_ county.
- Discover where the Blue Ridge Mountains meet the Shenandoah River in \_\_\_\_\_
- This county was incorporated on March 9, 1836 and will be celebrating 175 years of rich history in 2011: \_\_\_\_\_
- Whether you want to learn more about George Washington or Patsy Cline, you should visit \_\_\_\_\_
- Ask at the visitor centers for the three Ranger Explorer activity books. They were developed especially for tween and teen visitors through a grant from the park's fund raising partner \_\_\_\_\_
- Support SNP by purchasing a book, map or other educational materials at the Byrd or Dickey Ridge Visitor Center bookstores operated by \_\_\_\_\_
- Within the Shenandoah National Park, hike 101 miles of the Appalachian Trail, which is maintained by \_\_\_\_\_
- The Skyline Drive meets the Blue Ridge Parkway in this county: \_\_\_\_\_
- Visit the homes of two Virginia U.S. Presidents in this county: \_\_\_\_\_